

The Farm
AT CAPE KIDNAPPERS
 A LUXURY RETREAT FOR
 AN INTERNATIONAL CLIENTELE

WORDS / MIKA STEPHEN

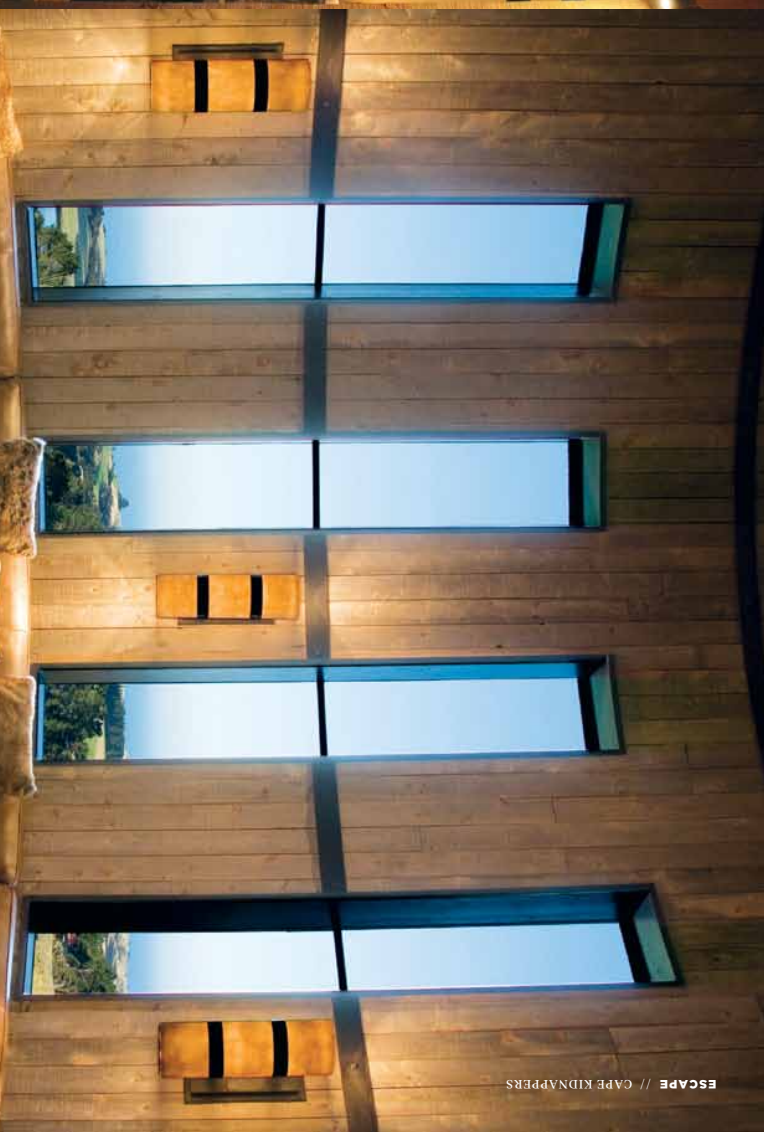
Cape Kidnappers is a rugged eight-kilometre headland that sits at the south-eastern extremity of New Zealand's Hawke's Bay. Here — situated between the headland and the coastal settlement of Tawaunga — lies the site of the original working farm station. Six thousand acres of verdant rolling hills, which dramatically plunge into the Pacific Ocean, offer spectacular scenery, and the location of the aptly named farm at Cape Kidnappers.

Built on the site of an original working sheep station, The Farm at Cape Kidnappers was envisaged as a homage to the vernacular tradition of working buildings where guests would gain a sense of place, rather than the buildings and interiors merely looking like a typical high-end hotel.





Loggia offers dining with grandstand views over the surrounding farmland, and out towards the Pacific.



Owners Julian and Josie Robertson engaged Auckland architect Andrew Paterson to execute the conceptual design for the lodge and adjacent cottages. Julian was instrumental in the design process and worked closely with Andrew on the initial concepts and then later with the interior designers. The focus was for the hotel to resemble a cluster of farm buildings that would blend naturally with the landscape and look right at home on the ridge above the cape.

In keeping with the farmhouse vernacular, Andrew designed large, lodge-style buildings to accommodate guests and a working hotel, but also to encompass a sense that the building had been there for a while. The original concepts for the design were challenging in situ, with a difficult built site and a tight timeframe for the project.

Designed with a distinct focus to sit on the land, The Farm at Cape Kidnappers is centred on the main lodge building, housing the hospitality spaces, and the individual suites. Initially, most of the guests were golfers but in the 10 years since the building's completion, this has expanded to a much broader clientele. The design concept of the lodge — with individual cottages — focuses on extended visits, with guests often staying multiple nights. Throughout the lodge, the dining spaces were specifically designed to each have their



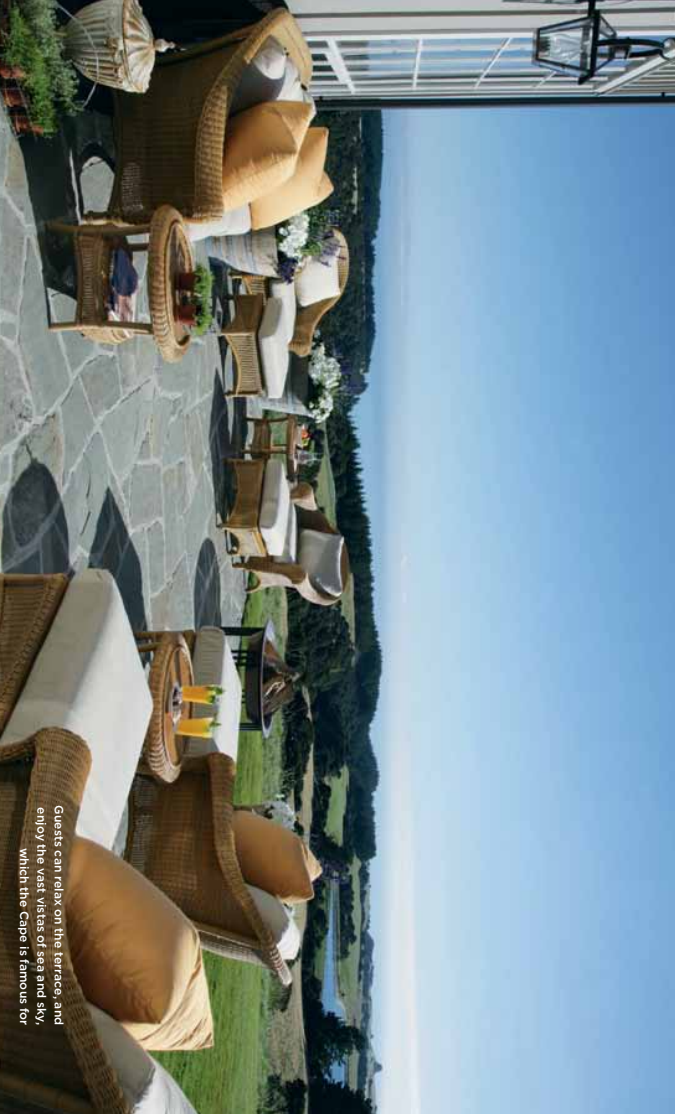
After a long day of exploring guests can relax (reside) for dining.

own distinct character, so guests can experience unique dining settings and styles over their stay. This includes a heated loggia overlooking the cape, the main dining room, the small dining room, the library, the snug in the silo and the wine room.

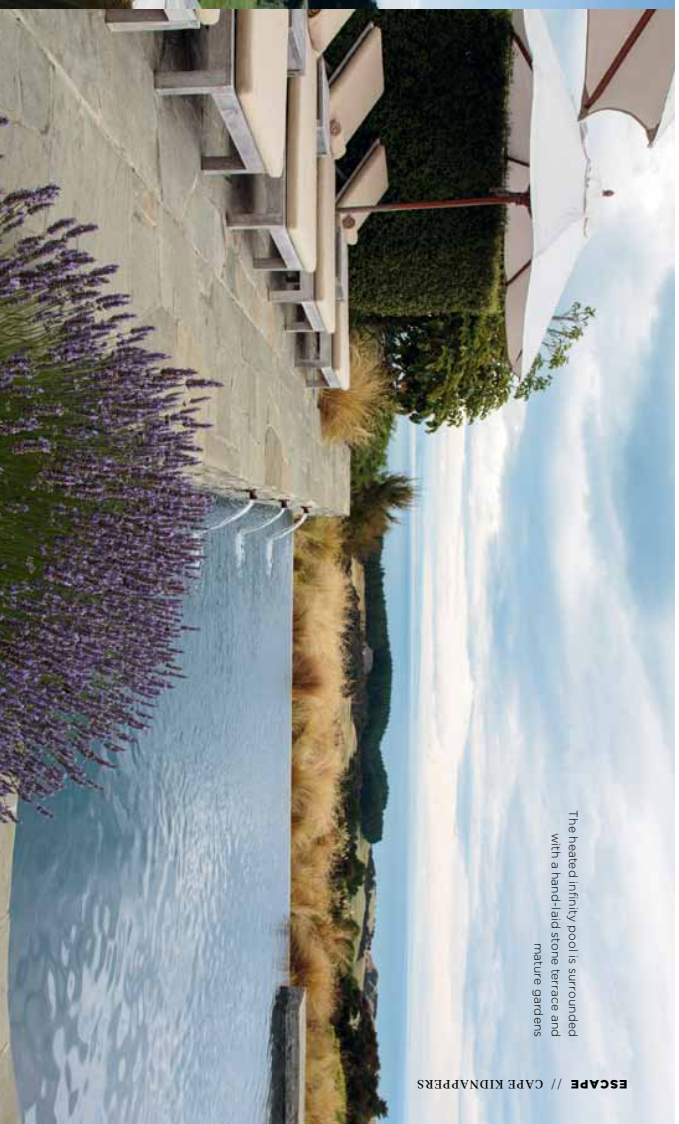
In keeping with the original design concept, the lodge is set up to feel like you are a guest in someone's home and every detail has been specifically designed with that in mind. Julian and Josie engaged Colorado-based interior designer Linda Bedell who had worked with

The snug offers guests a relaxed and cosy spot to enjoy a glass of the hotel's award-winning wine selection.





Guests can relax on the terrace, and enjoy the vast vistas of sea and sky, which the Cape is famous for.



The heated infinity pools is surrounded with a hand-laid stone terrace and mature gardens.

them on previous projects.

"We chose Linda Beddell, a friend and designer from Aspen, Colorado, who we had worked with 20 years earlier when we built a family vacation home in Sun Valley, Idaho," says Josie. "Linda was the ideal person to help us as she knew us both well and understood our dream. We wanted our guests to feel as if they were in a private home, not a commercial establishment. The rooms needed to be cosy and comfortable yet stylish and able to meet the high expectations of discerning international guests coming to Cape Kidnappers in search of a unique New Zealand rural experience."

Linda worked closely with the owners, architects and the construction team to ensure a seamless design was adhered to, encompassing both architectural details and interior design.

"We spent months ironing out all of the architectural details of the project," says Linda. "I also worked closely with the team from Argon Construction. They built a model cottage in one of their warehouses so that the Robertsons and I could literally walk through and work out all of the details."

Linda was the main driver of the interior project, from the initial design brief to specifying all the details, as well as coordinating a local team. Each space has been designed with its own individual style, but the overall look and feel of the hotel, with its many adjoining buildings, is consistent.

The colour palette focuses on neutral and earthy tones, while the fabrics and materials are each introduced for their natural aesthetic and



The board and batten style of the exterior structure is reminiscent of traditional barns which once stood on the station.

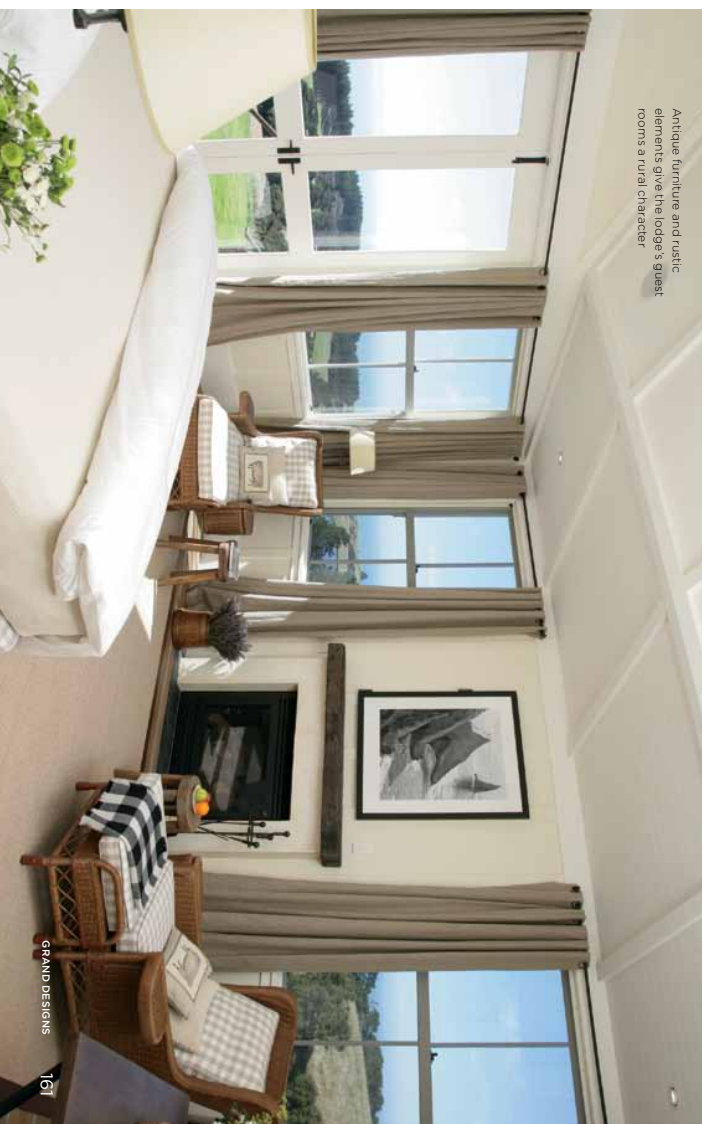
constitution. Old wooden beams grace the tall lobby entrance, which features stone floors and custom wrought-iron chandeliers. The lobby is filled with hand-picked antiques, which sets the character for the entire complex, and from here the guests can see through the lodge's internal courtyard and loggia and beyond to the cape.

The hero of the space is undeniably the breathtaking panoramic views and the

abundance of natural light.

Julian and Josie originally intended to create a space where visitors could become one with the landscape. Their vision has been far exceeded and the Barn at Cape Kidnappers is now a place for guests to fall in love with Hawke's Bay, just as the owners did on that omniuous first visit to a remote and rocky farm overlooking the Pacific Ocean. 📍

capekidnappers.com



Antique furniture and rustic elements give the lodge's guest rooms a rural character.



01



02



04



03

Get the Look

01: Light from ecc.co.nz 02: Gyro pendant from dawsonandco.nz 03: Stockholm three-seater sofa from ikea.com.au 04: Lorna cushion from shutthefrontdoor.co.nz 05: Slinky and Zig Zag side tables/stools from marktuckey.com.au 06: Cowhide from thecowhidecompany.co.nz 07: Chair from designwarehouse.co.nz 08: Professor chair from dawsonandco.nz



05



06



08



07